

# COVID-19 SCHOOL REPORT



January 2021

# THIS PRESENTATION GIVES YOU INFORMATION ABOUT...

- ▶ What school looks like now...
- ▶ Remote Learning Offer: our online platform and our remote timetable
- ▶ Remote Teaching and Learning - what are we doing at St. Mary's?
- ▶ How we support children and families with a Health Care Plan and those children who need additional support
- ▶ What's new?!

# HOW SCHOOL HAS CHANGED!

- ▶ On average we have 12 children in school. On average we had 35% of children in school each day - which is high given the guidance to operate safely is between 10% - 15%.
- ▶ We have sent a letter out to parents and made phone calls to parents we know are working from home; as a result we have lowered the average percentage of children in school to 30%. This will lower again after half term, due to some parents making alternative arrangements.
- ▶ SLT have created a timetable for staff to support the groups of children in school. All staff are in school, due to the high numbers of children. Most days we have two teachers and three TAs in school, as well the School Business Manager and the part-time SLT. Each teacher is given one day off the school site to manage workload. Teaching assistant hours are spread out over the week to create a manageable timetable of support.
- ▶ We have followed government guidance closely to ensure we are doing all we can make the school a safe and happy place to be.
- ▶ All risk assessments are in school and shared with the staff, if you wish to gather more information.

# HOW SCHOOL HAS CHANGED!

- ▶ SLT and teachers have a weekly meeting to look at new approaches to online learning and supporting children at home and in school. Teachers are now spending their days facilitating learning online, they are: sourcing, creating and setting online learning activities for the different year groups of children they work with. They are creating videos, setting up and leading meetings with other professionals and parents. They are also supporting the children and TAs in school, where they can.
- ▶ Mr. Gilmour and TAs (teaching assistants) staff have weekly meetings to discuss working arrangements in school to improve the support we give the children. The TAs support the children that are in school, who are all working on different devices. They also support teachers setting online tasks (where applicable) and are the wellbeing support to all our children in school. We have children from Reception to Year 6 in school, making it difficult to manage effective support.

# REMOTE LEARNING OFFER

- ▶ Schools are now expected to offer 3-4 hours of interactive learning for all children at primary school age. Sequential learning, timetable of learning of the national curriculum that resembles a normal school week should be in place. The remote offer should then be published on the school website. Any Ofsted visit would focus around this remote learning offer.
- ▶ The government and Ofsted have released guidance on best practice. Both documents are closely followed in order to offer the best education for the children at St. Mary's. *This guidance was not in place for the last lockdown.*
- ▶ Click on the logo link to view our remote offer:



# OUR ONLINE PLATFORM

- All work is set on the online learning platform called Seesaw. Seesaw is primary school friendly online platform that allows the SLT, teachers, TAs, children and parents to interact and communicate in a safe place. We are currently on the free trial, to sign up for Seesaw schools there is an annual payment of £200.



In the first month of this lockdown there are 4200 pieces of completed work in the online journals. All children and families are signed up and every child is completing work at home or in school.



## SUGGESTED HOME LEARNING TIMETABLE JANUARY 2021

This is ONLY a suggested timetable for you. Activities set will follow this routine but timings throughout the day will fit in with what is best for you and your family circumstances. The government recommend that work is set for children in primary school for 3 hours a day.

Time	Monday	Tuesday	Wednesday	Thursday	Friday
Am	Joe Wicks/ outside physical activity	Joe Wicks/ outside physical activity	Joe Wicks/ outside physical activity	Joe Wicks/ outside physical activity	Joe Wicks/ outside physical activity
Am	SPAG/Phonics (KS1) English	SPAG/Phonics (KS1) English	SPAG/Phonics (KS1) English	SPAG/Phonics (KS1) English	SPAG/Phonics (KS1) English
Break/Snack	Break	Break	Break	Break	Break
Am	Maths	Maths	Maths	Maths	Maths
Lunch	Lunch	Lunch	Lunch	Lunch	Lunch
Pm	One of:  Topic/Art/RE	One of:  Topic/Art/RE	One of:  Topic/Art/RE	One of:  Topic/Art/RE	Free Choice Friday (why not do something fun and creative?)

Remember it is really important for children to keep up with their basic maths and English. We would welcome to see other activities you may do at home, such as: baking, lego or other creative interests that you may have. If you need any support please get in touch.

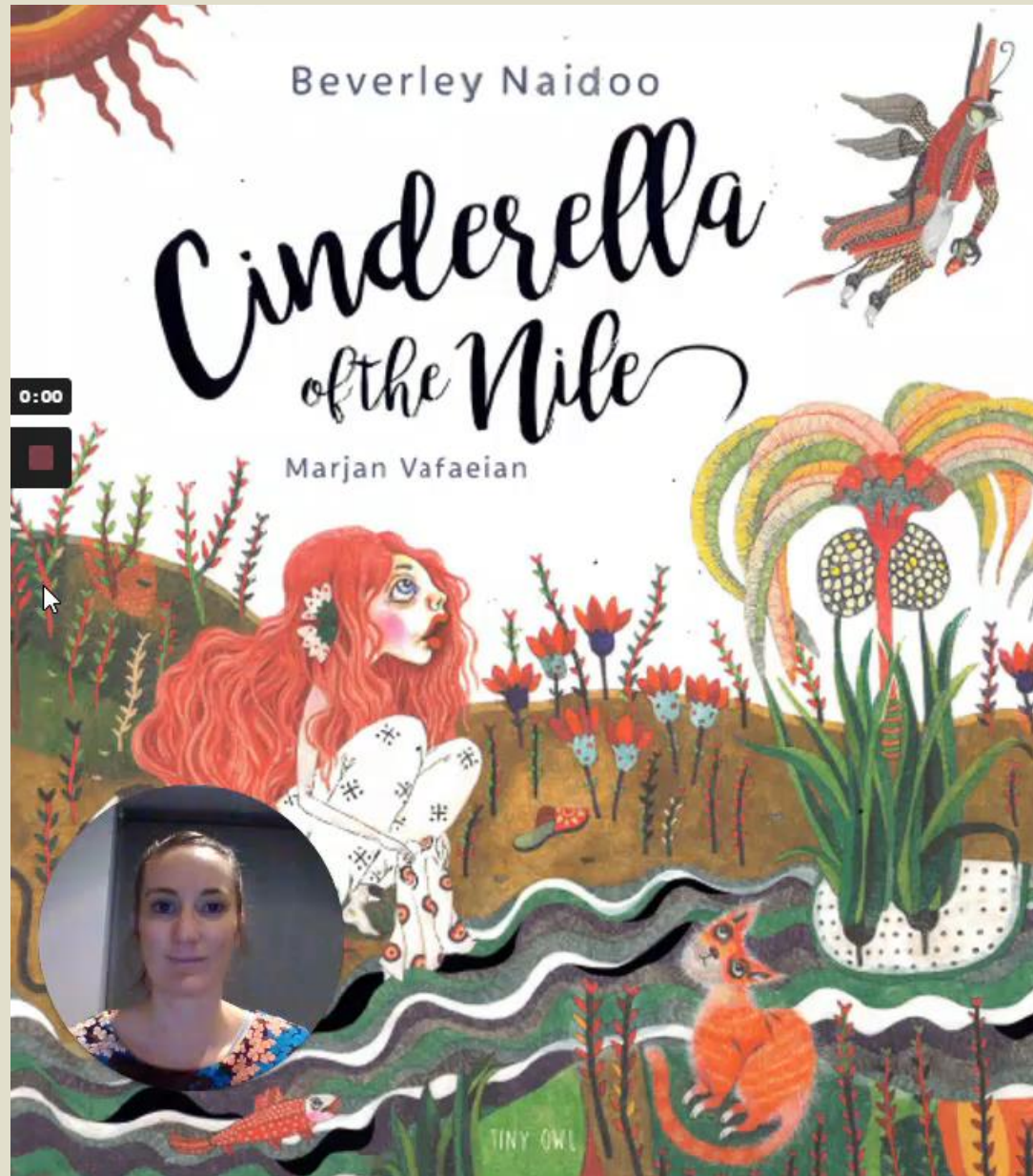
Teachers set work according to the suggested timetable. With providing pre-recorded lessons, this allows for flexibility of children and parents.

100% of children at home and at school complete tasks on Seesaw daily.

Where extra support is required teachers organise Zoom meeting with families where it is required.

For the first month of lockdown every family had 2 either phone calls/zoom meeting with the teacher.

# ONLINE TEACHING AND LEARNING



Read the first  
4 pages of the  
story.



# SLT VIDEOS!

## AWARD ASSEMBLY *5<sup>th</sup> February 2021*



## Candlemas

February 2<sup>nd</sup> 2021

The feast of Candlemas takes place 40 days after Christmas Day and is also called the Presentation of the Lord.



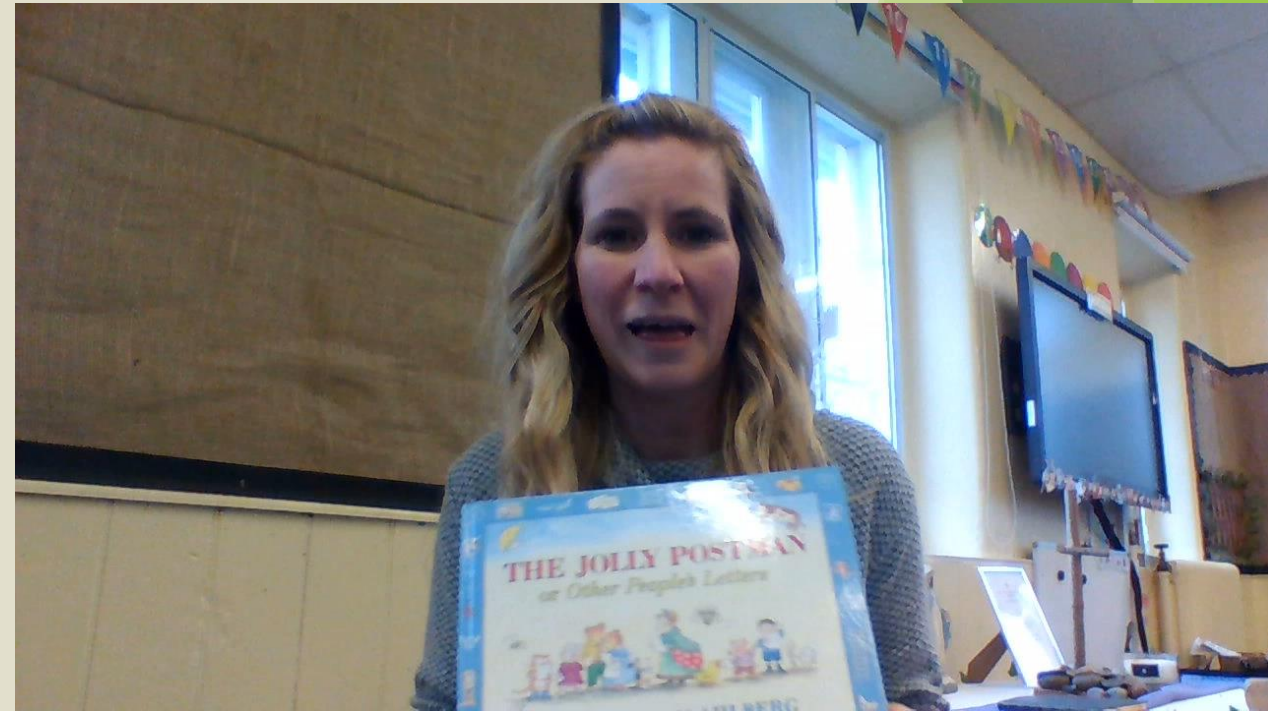
Every Monday and Friday, the SLT create assemblies to start and end the week. The Monday assembly links to the liturgical year, emulating a normal Monday assembly in school. The Friday assembly is the award assembly, again to emulate what would happen in a normal school week. We find keeping a routine, be it online, supports the routine and motivation of the children at home. Feedback has been excellent and supportive from parents and children. Children have enjoyed seeing their name and work on their screen!

# ONLINE TEACHING AND LEARNING

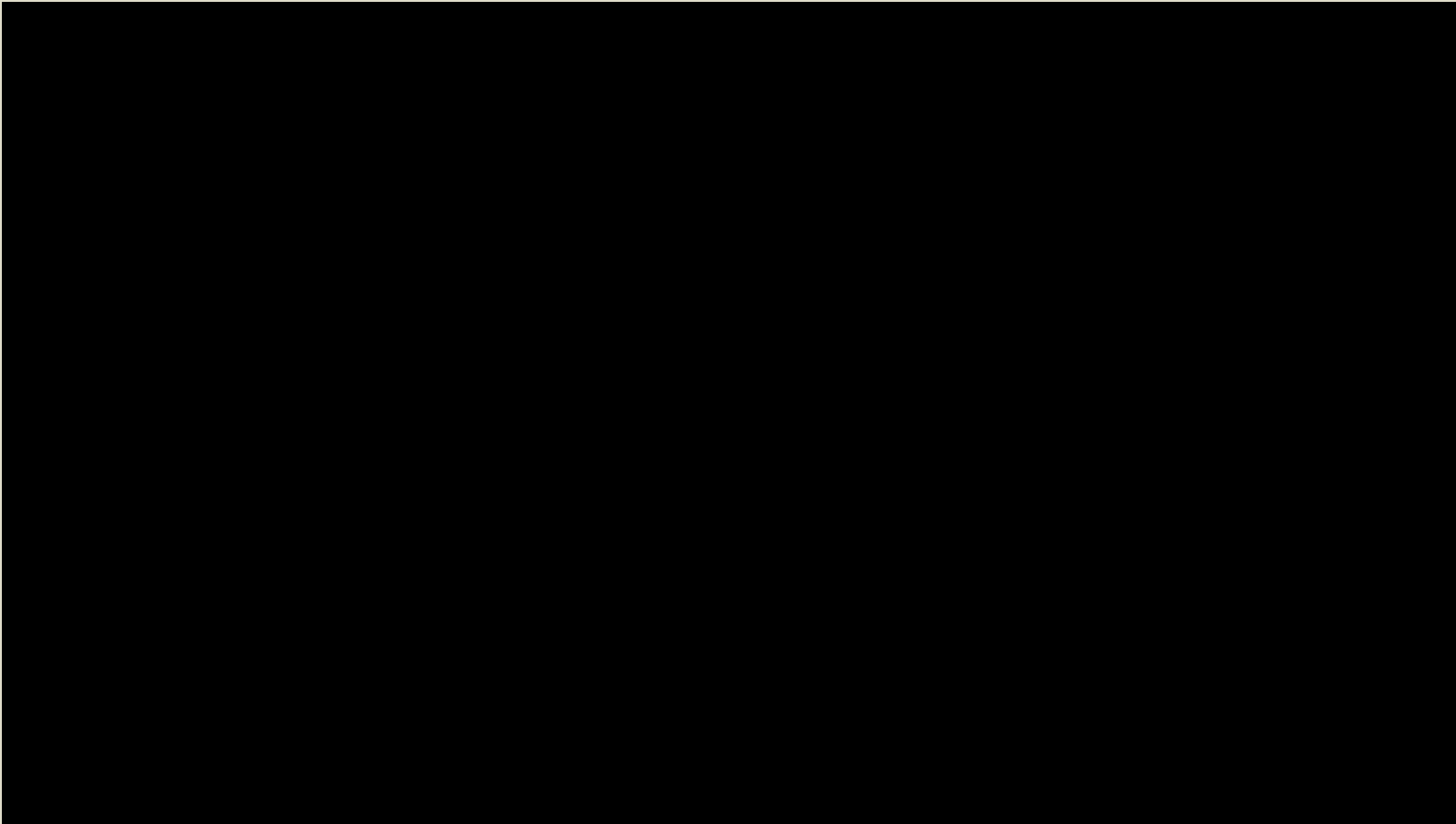
- ▶ We have paid subscriptions for: White Rose Maths, Purple Mash, Twinkl, Nesy Learning, Times Table Rock Stars and Espresso. All classes are signed up and staff manage the online resources to support children's learning.

## READING

- ▶ Reading is a fundamental skill that is taught daily in schools. Children from Class 1 do phonics daily with Miss Philpott, and we use EPIC! and Oxford Owl for online reading.
- ▶ We have additional subscriptions to: Epic!. Epic! is an online library, that is fun and interactive for children to use - to support the love of reading. There are over 35,000 e-books and videos for the children to access. Teachers can set activities to complete based on the topic and children have the ability to free-read if they wish. Teachers can see how many books have been read by each child and the class as a whole.
- ▶ Click on the photo to find out more

The logo for Epic! is displayed in a large, rounded rectangular box. The word "epic!" is written in a bold, blue, lowercase sans-serif font. The exclamation mark is also blue and has a thick outline. The entire logo is set against a white background within the box.

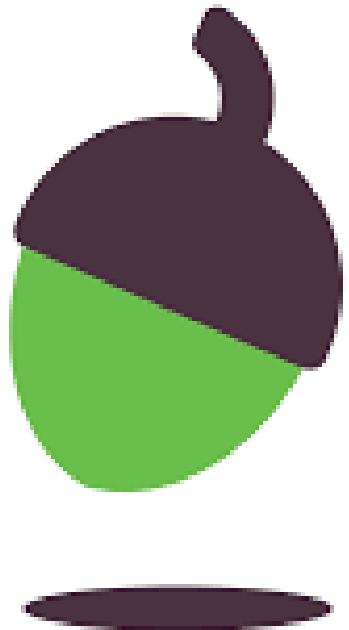
**READING** – Daily reading is promoted both in school and at home. Children have many avenues to access books both at school and online.



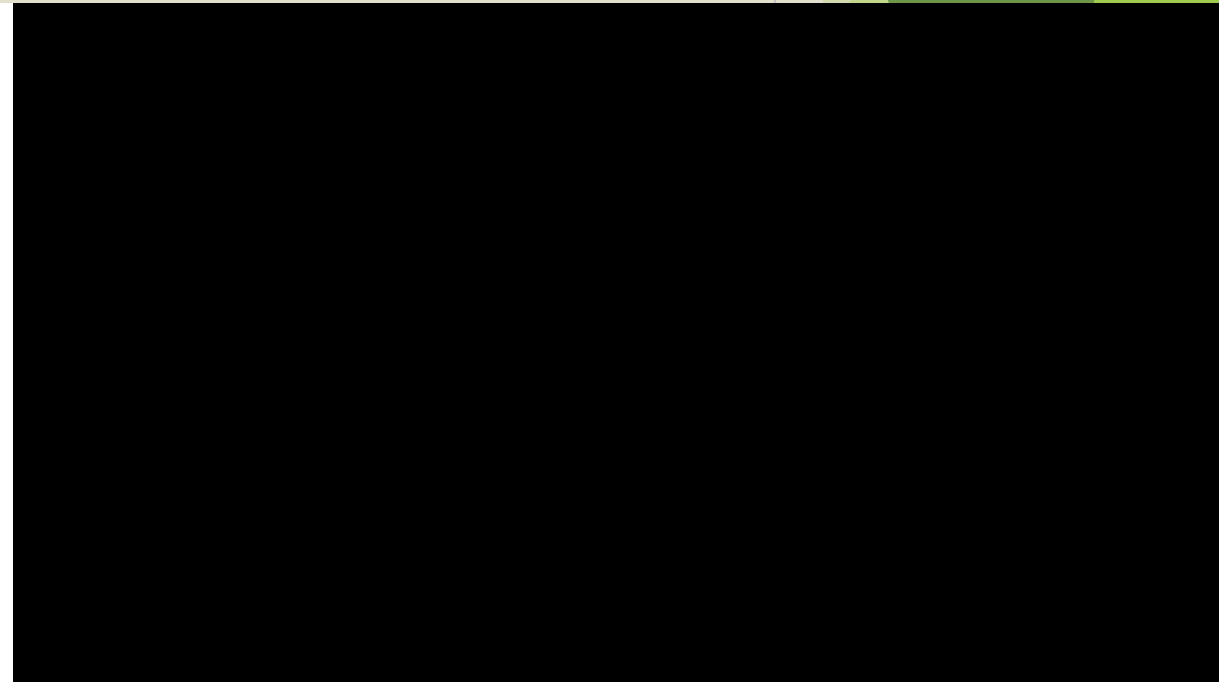
- ▶ Miss Deakin creates an iMovie book that is uploaded onto Youtube and sent out on Seesaw each week.

# ONLINE TEACHING AND LEARNING

- ▶ We also use Oak National Academy to give children teacher-led lessons and quizzes; this is a government funded online learning website, which gives children daily lessons with an online teacher. Click on the photo below to watch an Oak Academy Year 1 lesson.
- ▶ We use BBC Bitesize, which has a great set of resources for all subjects for the children to learn about. Again, there are videos and activities that are fun, educational and interactive.



**OAK**  
NATIONAL  
ACADEMY





# SUPPLEMENTARY TEACHING VIDEOS

Scan the QR code to see an example of sequential lessons from White Rose Maths.



Click on the logo to watch a White Rose Maths lesson





# WHAT IS ON OUR WEBITE?

- ▶ We have published a range of links, websites and information about staying safe online and online learning on our website. Click on the St. Mary's logo to view our 'Websites for Me' page on our website.



# WHAT ARE WE DOING FOR HEALTH AND WELLBEING?

- ▶ On our website, we have an updated well-being and safeguarding section and 'websites for me' in the Safeguarding section to support all the children's wellbeing and support at home. Also on our website, we publish the Operation Compass newsletter on the website, to inform parents who need any support.
- ▶ Teachers work from home for one day to allow them to 'catch-up' on Seesaw tasks and videos.
- ▶ We have regular meetings to support teachers and teaching assistants working in school to manage any issues or needs.
- ▶ Fortnightly check in Zoom meeting. Where is it required staff are having daily Zoom meetings with some families.



**Happy Staff = Happy School**

# Supporting families and children with an EHCP

- ▶ SLT have regular meeting with staff to look at planning, setting tasks and consider the needs of the children and families.
- ▶ Work is set to consider the IEP (Individual Education Plan) that is in place for each child. Work is set for parents to complete at home, with support from the teacher if needed.
- ▶ Fortnightly Zoom meeting and 1:1 instant messaging (daily) through the Seesaw platform allow for open lines of communication and support/
- ▶ Staff have met with Lynn McCann (SEN Specialist Teacher) to develop further strategies to support children and families at home.
- ▶ Lynn McCann is due to meet with families and school to look at what further support can be put in place - in the coming weeks.

# SO WHAT'S NEW- SAFER SCHOOLS APP

**SAFER SCHOOLS**

Department of Education  
www.education-ni.gov.uk

**The Department of Education  
Northern Ireland Safer Schools App**  
Supporting parents and carers to keep the  
children in their care safer online.

**Educate • Empower • Protect**

Download on the  
**App Store**

GET IT ON  
**Google Play**

Download the  
Safer Schools  
App for free  
today and log in  
using the QR code

**Parents / Carers - Secondary**

[www.ineqe.com/safer-schools-ni](http://www.ineqe.com/safer-schools-ni)

teach  
SECONDARY  
AWARDS  
2019

Telegraph  
IT AWARDS 2019

- ▶ School have developed the 'Safer School App' in partnership with Zurich Insurance and the Department of Education. This gives parents up to date information from the DfE to support health, wellbeing and safeguarding for online learning.
- ▶ The sign up will be released by school after half term

Click on the video in the bottom corner to find out more about the app

# SO WHAT'S NEW- TOPIC MAPS & CURRICULUM MAPS

For each half term, the teachers will create a topic map, giving an overview of the learning for that half term. This will give an indication and support to parents, as to what work will be set and how parents and children could develop their learning further in each topic.

This is carefully thought out to link to the [new curriculum maps](#) and to try and ensure children access all areas of the curriculum. Each teacher has a Curriculum consultation meeting with Miss Deakin and Mr Gilmour to ensure learning is thorough, creative and accessible for children at home and for the key worker children in school.



## Class 1

### The Amazing Place that I Call Home



## A Message from Us

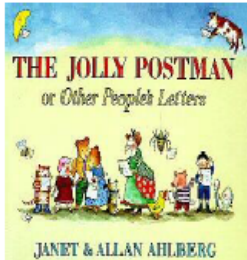
Happy New Year and welcome back everyone! I am so excited to explore all around the local area with you and learn more about Claughton, Catterall and Garstang. Even though we can't all be together in school at the moment, Mrs Gornall and I will be checking in with you fortnightly to see how you are getting on at home and giving you more detailed feedback about the learning that you have done using Seesaw. If you need us in the meantime, you can always message us on Seesaw or contact us at school. Keep safe and see you soon!

## Big Question

Are we fortunate?

## Ethical/World Thinking

To appreciate the diversity of the area that we live in and the areas that other people that we know live in.



## Learning Overview

This half term, pupils will learn about the local area (Claughton and the surround areas of Catterall and Garstang). We will read books written by Mairi Hedderwick and Janet & Allan Ahlberg. We will explore different genres of writing including postcards, narratives and information as well as learning about the geography of our local area and mapping skills.

## Key Vocabulary

Map	Past
Globe	Present
Compass	Chronological
Compass point	Human features
North	Physical features
South	Symbols
East	Similarities
West	Differences

## Trips and Visits

(Restricted due to January lockdown 2021)  
Local walks of the area to observe features and nature  
Video tour of another area (Poulton) for comparative purposes

English	Non-Chronological Reports Stories with Familiar Settings
Maths	Reception – numbers to 10, ordering, one more and less, combining groups and adding Year 1 – addition and subtraction, number and place value within 50 Year 2 – multiplication and division, statistics
R.E.	The Good News – know that Jesus used His power to help others and reflect on the importance of these events and brought the good news of God's love and what that meant for us.
Science	Observe changes over time of plants & animals in the locality.
Art and Design	Observational drawing of our local area using different materials. Reviewing what they have done with peers and discussing it.
Computing	Digital research of Claughton, the Isle of Struay and Poulton-le-Fylde.
Geography	Use a range of maps at different scales. Study the geography of the school and its grounds. Ask simple geographical, 'where?', 'what?', 'who?' questions about the world and the environment. Recognise the distinction between past and present. Identify similarities and differences between the present and aspects of the past. Use common words and phrases about the passing of time. Develop an understanding of how Claughton might have changed over time.
History	Learn to sing & play instruments to nursery rhymes and action songs listening and responding to different styles of music
Music	Consolidating fundamental movement skills.
P.E.	Me and my relationships – feelings, friendships, special people.

## Important Information and Dates

National Handwriting Day – 23<sup>rd</sup> January  
The Conversion of St Paul, Apostle – 25<sup>th</sup> January  
Big Garden Birdwatch – 29<sup>th</sup> January  
National Storytelling Week – 1<sup>st</sup> February  
Star Count Week – 6<sup>th</sup> February

## Places of Interest

Brock Bottoms  
Beacon Fell  
River Brock  
River Wyre  
Millennium walk at Garstang (and other local walks)

## Useful Websites

[www.google.co.uk/maps](http://www.google.co.uk/maps)  
[www.couragemash.co.uk](http://www.couragemash.co.uk)  
[www.oxfordowl.co.uk](http://www.oxfordowl.co.uk)  
[www.phonicsplay.co.uk](http://www.phonicsplay.co.uk)  
<https://www.bbc.co.uk/teach/class-clips-video/geography-ks1-ks2-maps-zdwhp08>

## How Can My Parents Help Me?

Daily reading including a variety of genres and asking questions (both literal and using inference) about what you have read.  
Daily counting forwards and backwards (and in multiples of 2, 5 and 10 for Year 2)  
Trips around the local area noticing the features and discussing what you see together to enable the development of key vocabulary.  
"Tell me and I forget, teach me and I may remember, involve me and I learn." Benjamin Franklin



# Class 1

## The Amazing Place that I Call Home



### Learning Overview

This half term, pupils will learn about the local area (Cloughton and the surround areas of Catterall and Garstang). We will read books written by Mairi Hedderwick and Janet & Allan Ahlberg. We will explore different genres of writing including postcards, narratives and information as well as learning about the geography of our local area and mapping skills.

### Key Vocabulary

Map	Past
Globe	Present
Compass	Chronological
Compass point	Human features
North	Physical features
South	Symbols
East	Similarities
West	Differences

### Trips and Visits

(Restricted due to January lockdown 2021)

Local walks of the area to observe features and nature

Video tour of another area (Poulton) for comparative purposes

English	Non-Chronological Reports Stories with Familiar Settings
Maths	Reception – numbers to 10, ordering, one more and less, combining groups and adding Year 1 – addition and subtraction, number and place value within 50 Year 2 – multiplication and division, statistics
R.E.	The Good News – know that Jesus used His power to help others and reflect on the importance of these events and brought the good news of God's love and what that meant for us.
Science	Observe changes over time of plants & animals in the locality.
Art and Design	Observational drawing of our local area using different materials. Reviewing what they have done with peers and discussing it.
Computing	Digital research of Cloughton, the Isle of Struay and Poulton-le-Fylde.
Geography	Use a range of maps at different scales. Study the geography of the school and its grounds. Ask simple geographical, 'where?', 'what?', 'who?' questions about the world and the environment.
History	Recognise the distinction between past and present Identify similarities and differences between the present and aspects of the past. Use common words and phrases about the passing of time. Develop an understanding of how Cloughton might have changed over time.
Music	Learn to sing & play instruments to nursery rhymes and action songs listening and responding to different styles of music
P.E.	Consolidating fundamental movement skills.
P.S.H.C.E.	Me and my relationships – feelings, friendships, special people.

## A Message from Us

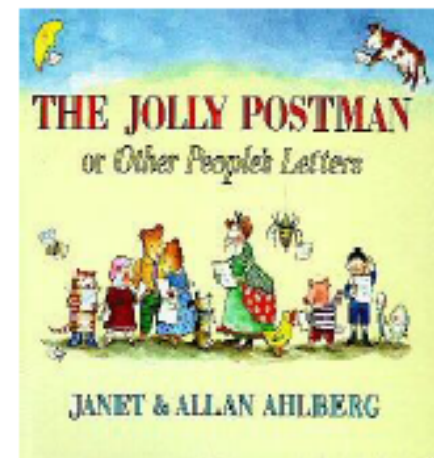
Happy New Year and welcome back everyone! I am so excited to explore all around the local area with you and learn more about Claughton, Catterall and Garstang. Even though we can't all be together in school at the moment, Mrs Gornall and I will be checking in with you fortnightly to see how you are getting on at home and giving you more detailed feedback about the learning that you have done using Seesaw. If you need us in the meantime, you can always message us on Seesaw or contact us at school. Keep safe and see you soon!

## Big Question

Are we fortunate?

## Ethical/World Thinking

To appreciate the diversity of the area that we live in and the areas that other people that we know live in.



## Important Information and Dates

National Handwriting Day – 23<sup>rd</sup> January

The Conversion of St Paul, Apostle – 25<sup>th</sup> January

Big Garden Birdwatch – 29<sup>th</sup> January

National Storytelling Week – 1<sup>st</sup> February

Star Count Week – 6<sup>th</sup> February

## Places of Interest

Brock Bottoms

Beacon Fell

River Brock

River Wyre

Millennium walk at Garstang (and other local walks)

## Useful Websites

[www.google.co.uk/maps](http://www.google.co.uk/maps)

[www.purplemash.co.uk](http://www.purplemash.co.uk)

[www.oxfordowl.co.uk](http://www.oxfordowl.co.uk)

[www.phonicsplay.co.uk](http://www.phonicsplay.co.uk)

<https://www.bbc.co.uk/teach/class-clips-video/geography-ks1-ks2-maps/zdwhpq8>

## How Can My Parents Help Me?

Daily reading including a variety of genres and asking questions (both literal and using inference) about what you have read.

Daily counting forwards and backwards (and in multiples of 2, 5 and 10 for Year 2)

Trips around the local area noticing the features and discussing what you see together to enable the development of key vocabulary.

"Tell me and I forget, teach me and I may remember, involve me and I learn." Benjamin Franklin