



A small school with a big heart

NEWSLETTER

FRIDAY 16 SEPTEMBER 2022

St Mary's Catholic Primary School, Smithy Lane,
Claughton-on-Brock,
PR3 0PN Tel: 01995 640258



Star of the Week Class 1

Mia: for her excellent work ethic and perseverance in maths.

Henry: for working hard and checking his work in sentence writing.

Star of the Week Class 2

Belle: for excellent listening skills and for always having a super work ethic.

Maria: for great work in maths.



Big Hearts are awarded to:

Arthur: for being kind and caring in class, and always looking out for others.

Jasmine R: for always working hard and striving to achieve her best.

Notices

School closure: just a reminder that we will be closed on Monday 19 September for the funeral of Queen Elizabeth II. We will reopen on Tuesday 20 September. The Reception photo for the LEP has been rearranged for Tuesday 27 September.

Flu consent forms: the link to the consent form for the flu nasal vaccinations was emailed out this week. Please complete it as soon as possible if you wish your child to be vaccinated. The vaccinations will take place in November. You can access the consent form here:

Online Consent Form:

1. Please use the following link to access the online consent form: www.bthimmunisations.co.uk/Forms/Flu
2. Please quote the unique school code. The code for your school is BP119619

Please complete the online consent form for both consent / no consent giving reasons.

Please inform the School Vaccination Team (Not School) of the following on

Blackpool, Wyre & Fylde: 01253 951984

Lancaster & Morecambe: 01524 406672

- If your child has steroid tablets prescribed two weeks prior to vaccination.
- If in the few days prior to vaccination your child has been wheezy.
- If consent is received and you take your child to your GP surgery to receive the vaccination.

It is your responsibility to contact the school vaccination team to ensure they do not receive the immunisation again.

Yr 5 and 6 football competition: if your child has a slip for this event please return it on Tuesday morning so that we can confirm numbers for the competition which is on Wednesday. Thank you.

Numbers Club September 2022: winners this month are: first prize (£50.00) to Mr R Thompson (117) and second prize (£20.00) to T.S. Darbyshire (165). We are so grateful to all our generous Numbers Club supporters who are helping to fund the high cost of transporting a hot meal to school each day for the children. If anyone else would like to join, please do contact the office.

Charges: a reminder of charges for our new offerings ... Music lessons are £2 (group) and £7 (individual). Morning drop-off at 8.30am is £1. After-school club is £4 until 4.30pm and £7 until 5.30pm. School dinners are £2.50 per meal.

Payments to school: school dinners, music lessons, morning drop-off and after-school club charges will be invoiced to you at the end of each month. Please pay by bank transfer wherever possible. Details will be on the invoice. Please use your child's name as the reference.

Childcare vouchers: if you wish to use vouchers to pay for morning drop-off and after-school club, please email the office with details of your voucher provider so that we can set their scheme up on our systems. We have to do this before we can process the voucher payment.

Water bottles: please note that water bottles should contain water only. Fruit juices, cordials and so on are not allowed. Thank you.

Packed lunch days: our new exciting school dinners are now up and running. As you are aware, the dinners are transported from the kitchen of another school. There are three dates this year when their kitchens will not be open due to inset days taking place. On those days we would ask that you send your children to school with a packed lunch.

The dates are: **3 January 2023, 4 January 2023 and 26 May 2023.** We will issue reminders nearer the time.

Allergies: please find at the end of this newsletter a list of possible allergens that may be present in the food served in school at lunch times and in after-school club. We are obliged to make you aware of this.

PE Days: will be on Tuesday and Thursday for Class One, and on Monday and Wednesday for Class Two. Please send your child into school in their PE uniform on PE days.

The Week Ahead

Monday 19 September	SCHOOL CLOSED
Tuesday 20 September	Class One PE
Wednesday 21 September	Class Two PE Yr5/6 Football Competition 4-5pm Garstang High
Thursday 22 September	Whole school mass at Claughton church – all welcome Class One PE
Friday 23 September	Class 1 Forest school enrichment club until 4.30pm Class 2 Lego coding enrichment club until 4.30pm

Dates For Your Diary

Tuesday 27 September	LEP photo of Reception
Tuesday 18 October	Macmillan coffee morning and music concert 2pm
Friday 21 October	School closes at 3.30pm for half term



Let us pray
Almighty ever-living God,
life of all that is mortal and joy of the saints,
we humbly pray to you for your servant
Elizabeth our Queen,
that, freed from the bonds of mortality,
she may possess your Kingdom in everlasting
glory. Through Christ our Lord.
Amen

We continue to pray for the people of Ukraine...

Loving God,

We pray for the people of Ukraine, for all those suffering or afraid,
that you will be close to them and protect them.

We pray for world leaders, for compassion, strength and wisdom to guide their choices.

We pray for the world that, in this moment of crisis,
we may reach out in solidarity to our sisters and brothers in need.

May we walk in your ways, so that peace and justice
become a reality for the people of Ukraine and for all the world. Amen.

Wishing you all a pleasant weekend and we'll see you on Monday...

ALLERGEN LIST

Celery

This includes celery stalks,
leaves and seeds and celeriac.
It is often found in celery salt,
salads, some meat products,
soups and stock cubes.

Cereals containing gluten

This includes wheat (such as
spelt and Khorasan
wheat/Kamut), rye, barley
and oats. It is often found in
foods containing flour, such
as some baking powders,
batter, breadcrumbs, bread,
cakes, couscous, meat
products, pasta, pastry,
sauces, soups and foods
dusted with flour.

Crustaceans

This includes crabs, lobster,
prawns and scampi. It is often
found in shrimp paste used in
Thai curries or salads.

Eggs

This is often found in cakes,
some meat products,
mayonnaise, mousses, pasta,
quiche, sauces and foods
brushed or glazed with egg.

Fish

This is often found in some
fish sauces, pizzas, relishes,

salad dressings, stock cubes
and in Worcestershire sauce.

Lupin

This includes lupin seeds and flour, and can be found in some types of bread, pastries and pasta.

Milk

This is found in butter, cheese, cream, milk powders and yoghurt. It is often used in foods glazed with milk, powdered soups and sauces.

Molluscs

This includes mussels, land snails, squid and whelks. It is often found in oyster sauce or as an ingredient in fish stews.

Mustard

This includes liquid mustard, mustard powder and mustard seeds. It is often found in breads, curries, marinades, meat products, salad dressing, sauces and soups.

Nuts

This includes almonds, hazelnuts, walnuts, cashews, pecan nuts, Brazil nuts, pistachio nuts, macadamia or Queensland nuts. These can be found in breads, biscuits, crackers, desserts, ice cream, marzipan (almond paste), nut oils and sauces. Ground, crushed or flaked almonds are often used in Asian dishes such as curries or stir fries.

Peanuts

This can be found in biscuits, cakes, curries, desserts and sauces such as for satay. It is also found in groundnut oil and peanut flour.

Sesame seeds

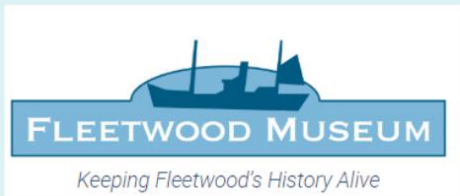
This can be found in bread, breadsticks, houmous, sesame oil and tahini (sesame paste).

Soya

This can be found in beancurd, edamame beans, miso paste, textured soya protein, soya flour or tofu. It is often used in some desserts, ice cream, meat products, sauces and vegetarian products.

Sulphur dioxide

This is often used as a preservative in dried fruit, meat products, soft drinks and vegetables.



Facebook: @thebayblueprint
Instagram: @thebaywellbeing
Website: www.thebay.org.uk



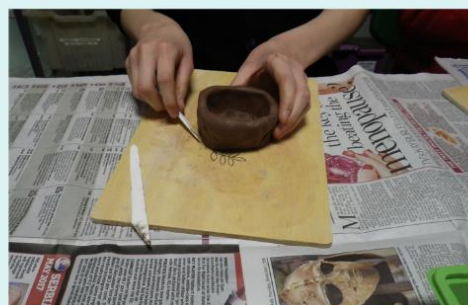
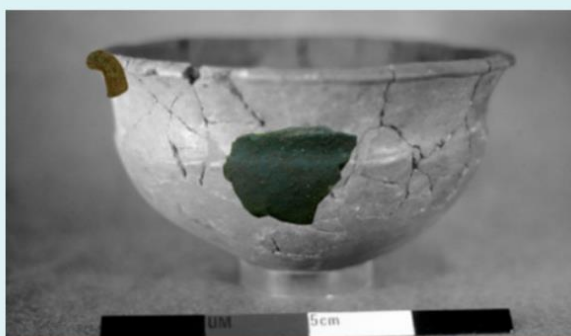
EVENT DETAILS

DATE: Saturday 17th

September

TIME: Drop in anytime 11 am – 3.00pm

VENUE: Fleetwood Museum



SEE FULL DETAILS ON
EVENTBRITE.
Scan this QR Code:



Drop-in heritage event with Oxford Archaeology

This is a chance to see what has been uncovered during recent excavations on the Fylde Peninsula and meet the archaeologists involved.

Oxford Archaeology North have been investigating a prehistoric site which sheds new light on the transition from hunting and gathering to farming in the area 6,000 years ago.

- Learn about archaeological finds made on your doorstep
- See and handle real artefacts
- Find out how we can understand environmental change thousands of years ago
- Make and take away replica clay pots
- Discover how technology helps to record sites and finds

CONNECTING LOCAL COMMUNITIES TO NATURE TO PROMOTE WELLBEING AND TACKLE ISOLATION.

